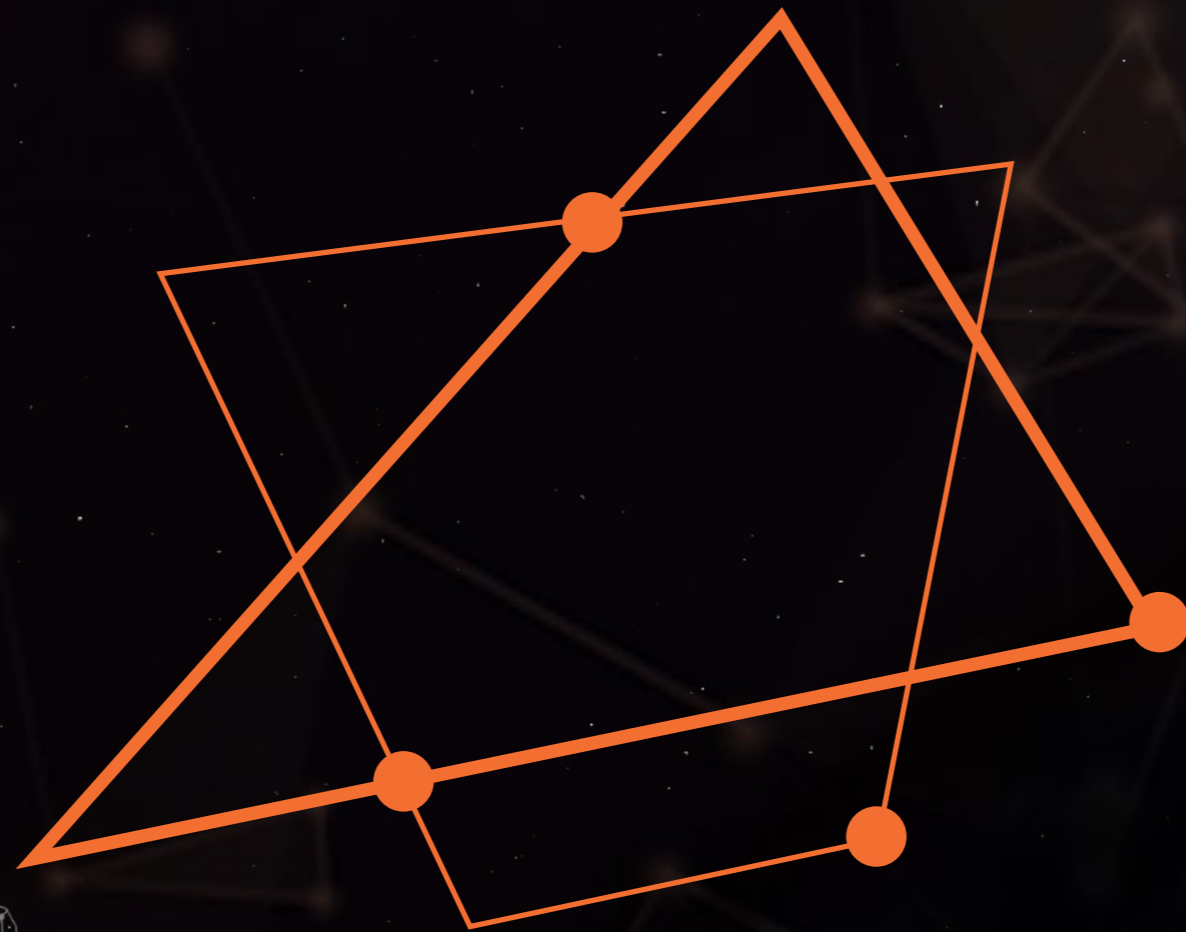




**SPACELABS**  
virtualLAB

# IMMERSED IN 3 DIMENSION

---



The combination of scientific accuracy and captivating appearance of our visuals and animations bring projects and products to life.

At ATG **virtual**LAB we develop virtual engineering tools that aim to **reduce cost and increase efficiency** in product and technology development by introducing new interfaces to existing engineering data and processes.

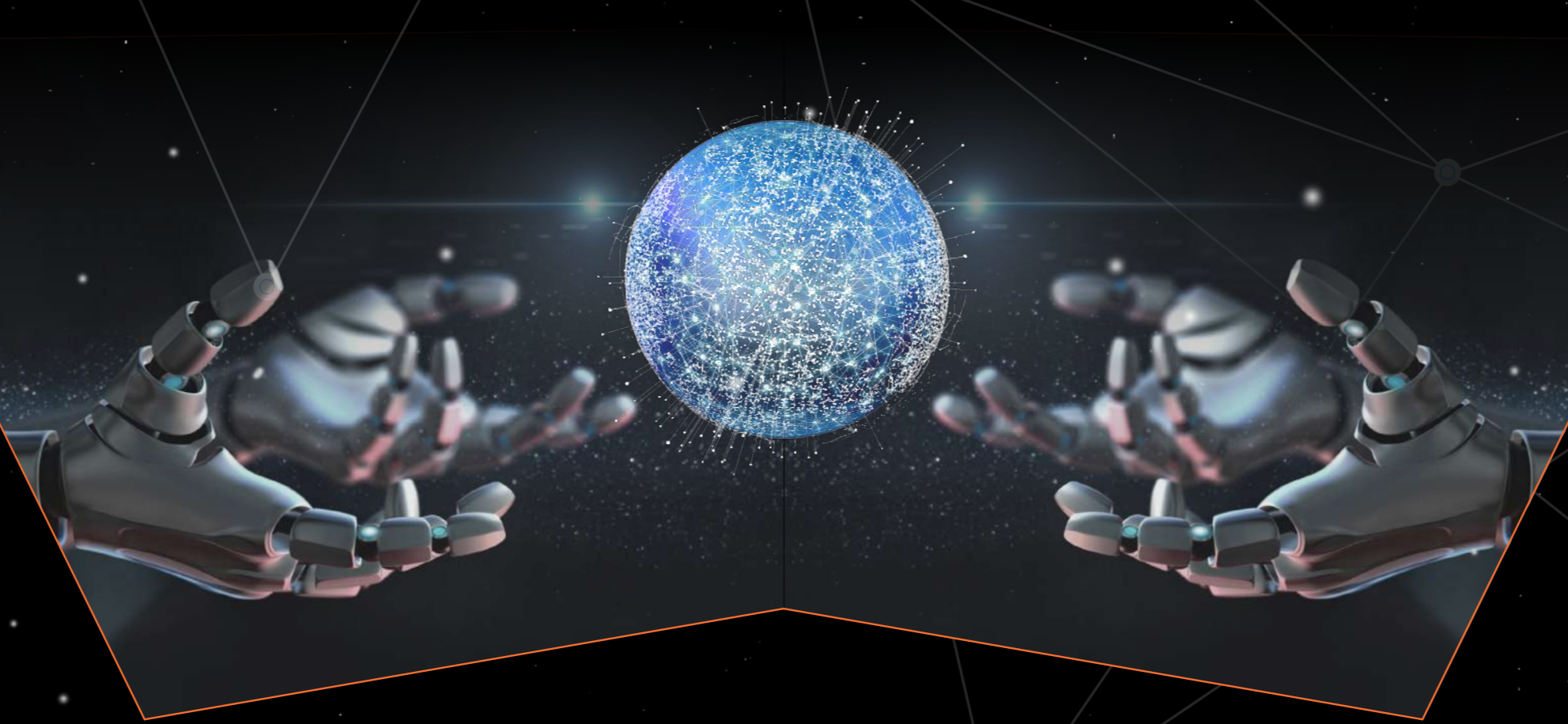
# WHAT WE OFFER

We virtualise not only complex three-dimensional designs and assemblies but also all underlying data related to the development process. This way we can create a true digital twin in a fully virtual environment, for the user to interact with. This offers increased understanding and insights into the product, and less room for misinterpretations and miscommunications. designs and motion graphics in support of two-dimensional visual communication products.



## OUR AREAS OF DEVELOPMENT

- COMMUNICATION & REVIEWING THROUGH VIRTUAL MOCK-UPS**  
ATG virtualLAB creates virtual reality tools that allow multiple user to inspect and discuss about digital design of their products.
- VIRTUAL DESIGN (CABLE HARNESSING)**  
Our Lab develops a virtual harnessing tool that allows user to quickly iterate on early stage harnessing designs and test out different configurations.
- VIRTUAL ASSEMBLY & INTEGRATION**  
To support assembly and integration, ATG virtualLAB offers training experiences tailored to customer needs and products.
- VIRTUAL PROTOTYPING**  
Using virtual reality our Lab provides a cheap and low risk process to test out specific products and designs.
- OUTREACH AND EDUCATION IN VR/AR**  
Virtual and augmented reality are engaging ways to educate and inform people on otherwise difficult topics. ATG virtualLAB develops experiences for institutes and musea for exactly that reason.



## THE NEEDS

---

Streamlining communication and knowledge transfer in projects deserves attention.

Virtual and augmented reality can play an important role to help optimize these processes. This inevitably leads to more efficiency and can greatly reduce cost of development without compromising quality.

## THE SOLUTION

---

ATG Europe has brought together the knowledge and expertise built up in its engineering department with the skills in visualization apparent in its medialLAB into a new business unit ATG virtualLAB.


The two departments cooperate, building on their existing know-how, to come-up with novel solutions using Virtual and Augmented Reality for the demands of the new commercial Space environment.

# ACHIEVEMENTS



ATG virtualLAB has provided immersive solutions in the frame of large and complex space missions.

A good example of this is the virtual engineering platform (vrep) our lab provided to the plato team to support the preliminary design review of the full satellite assembly



The VREP provides multiple customers the means to visualise, virtualise, inspect and handle complex designs and assemblies in an immersive environment at the same time.



# SPACELABS

virtualLAB



## ATG EUROPE

Space Business Park  
Huygensstraat 34  
2201 DK Noordwijk,  
The Netherlands

## ATG INNOVATION

Office 11 & 12, Level One, Unit 8  
Galway Technology Park  
Parkmore, Galway,  
Ireland

[contactus@atg-europe.com](mailto:contactus@atg-europe.com)  
[WWW.ATG-EUROPE.COM](http://WWW.ATG-EUROPE.COM)

